

LC1 LENSES FOR CREE XR-E LEDs



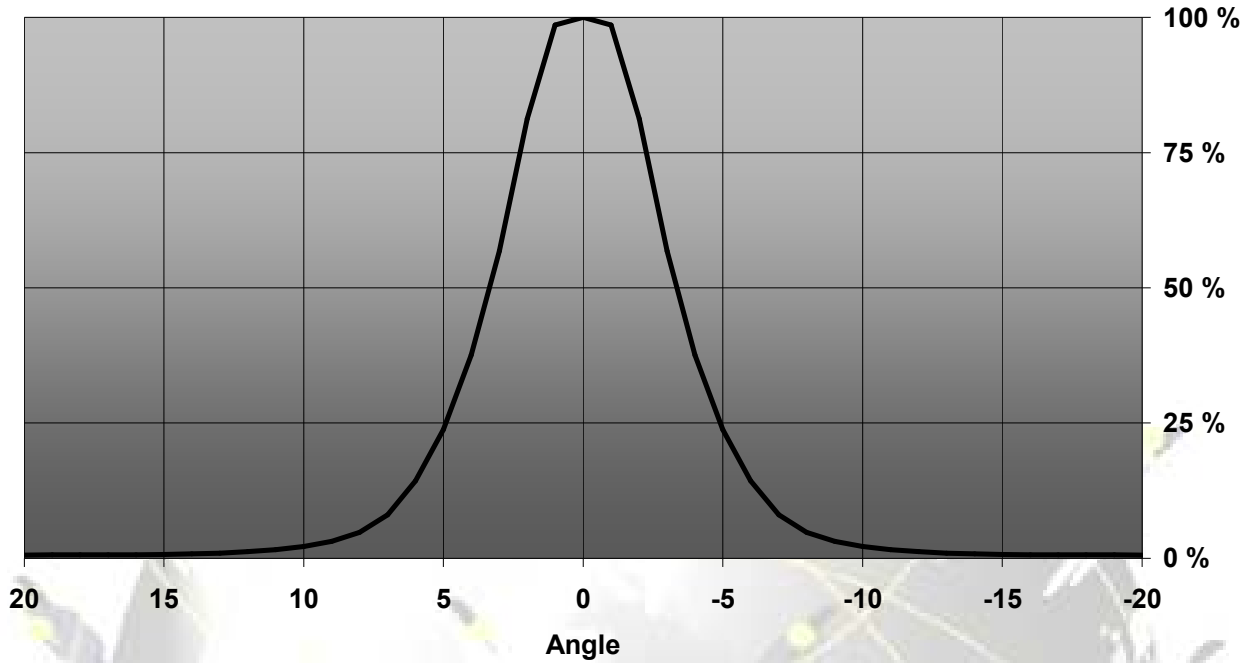
- Specially designed for Cree XLAMP XR-E series of LEDs.
- Special care taken to make a uniform white or warm white illumination. Lenses work well with other colors, too.
- Lens material optical grade PMMA. Allows use of high current and temperature conditions. Holder material ABS.
- Best available optical efficiency, more than 90%, with an extremely good cutoff of light
- Fastening of holden to PCB with appropriate adhesive, e.c. epoxy or polyurethane based. NOTE: DO NOT USE SUPERGLUE.

LENS TYPES

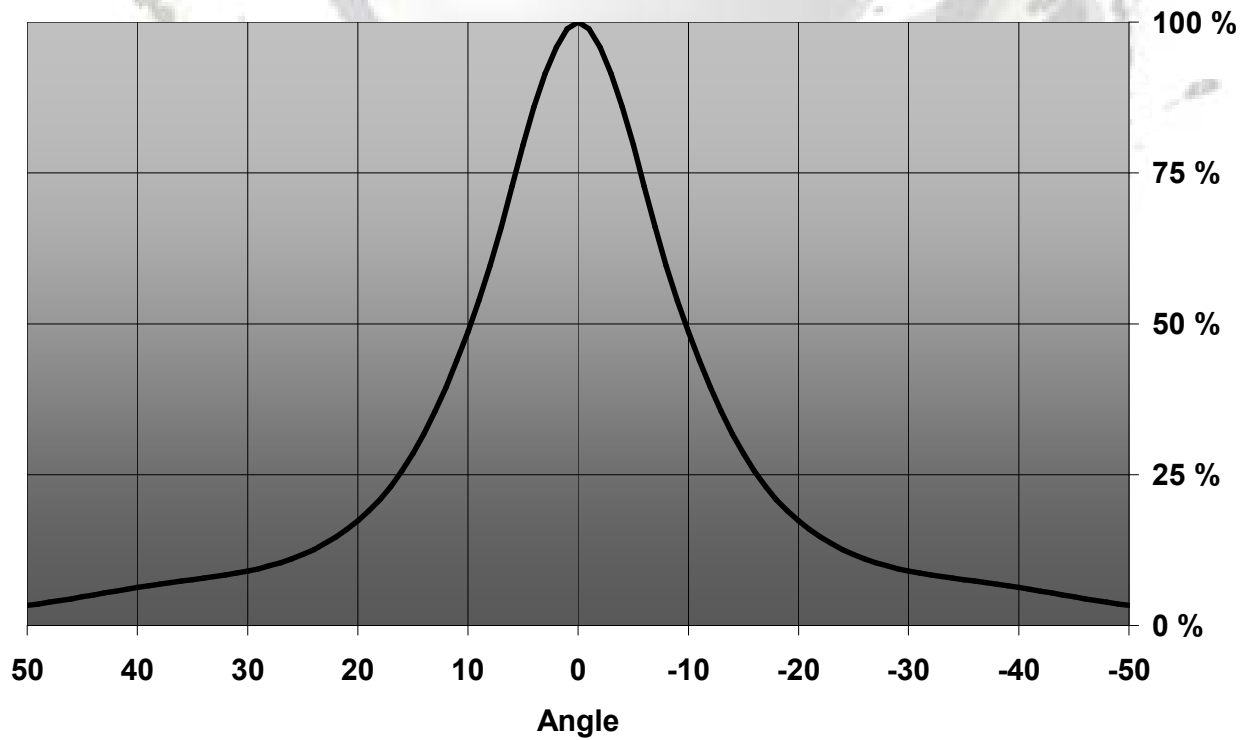
NAME	ORDERING CODE	FWHM Angle
LC1 REAL SPOT	FA10808_LC1-RS	±3°
LC1 DIFFUSER	FA10810_LC1-D	±9.8°
LC1 MEDIUM	FA10807_LC1-M	±14°
LC1 RECTANGULAR	FA10809_LC1-REC	±21° x ±11°

MEASUREMENT DATA

Relative Intensity LC1-RS

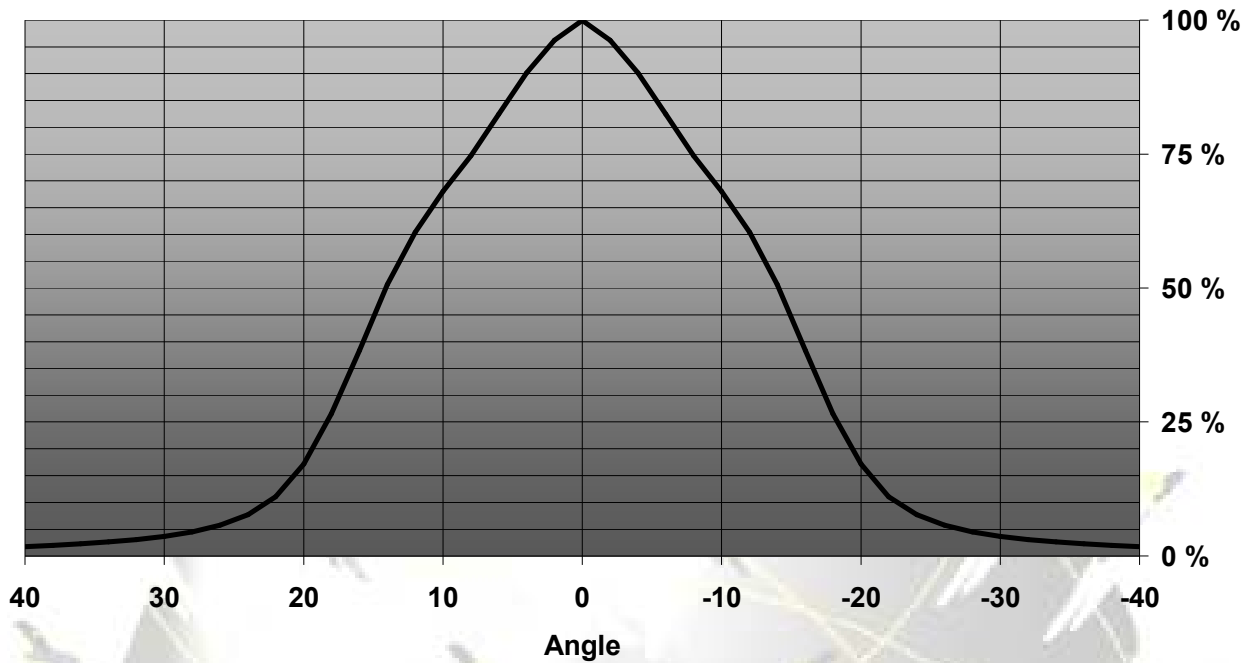


Relative Intensity of LC1-D (n.F10627)

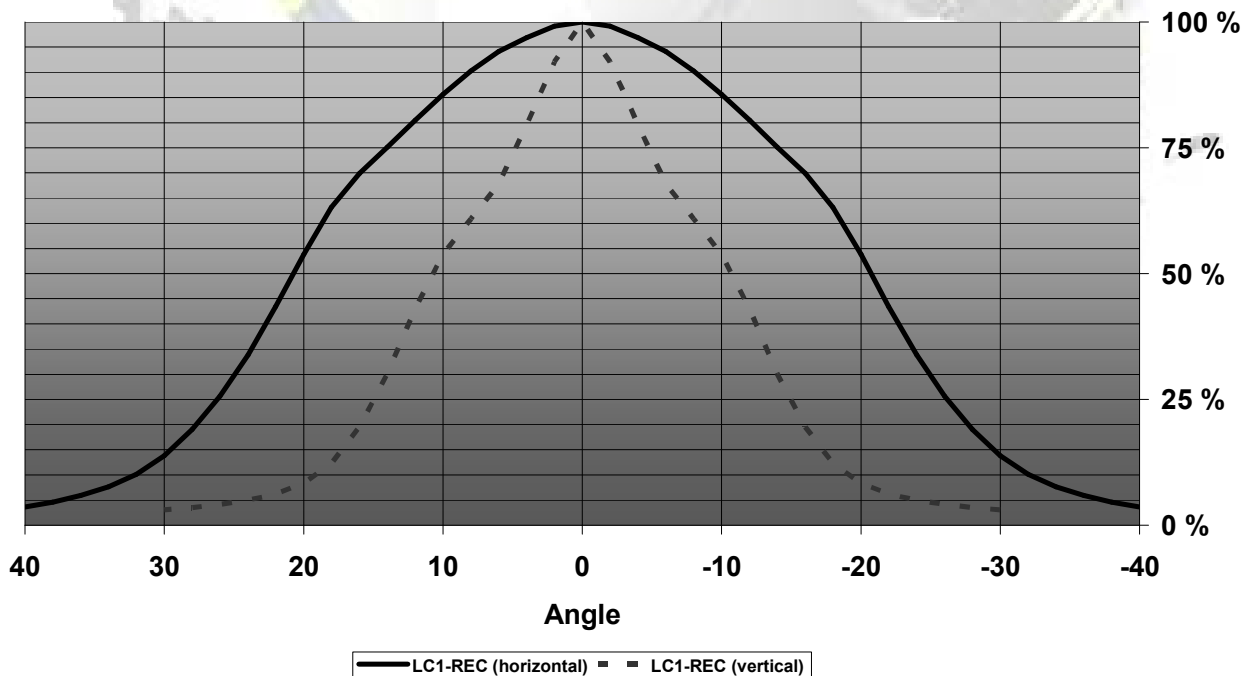


© Ledil Oy – PRELIMINARY - Subject to change without prior notice

Relative Intensity of LC1-M

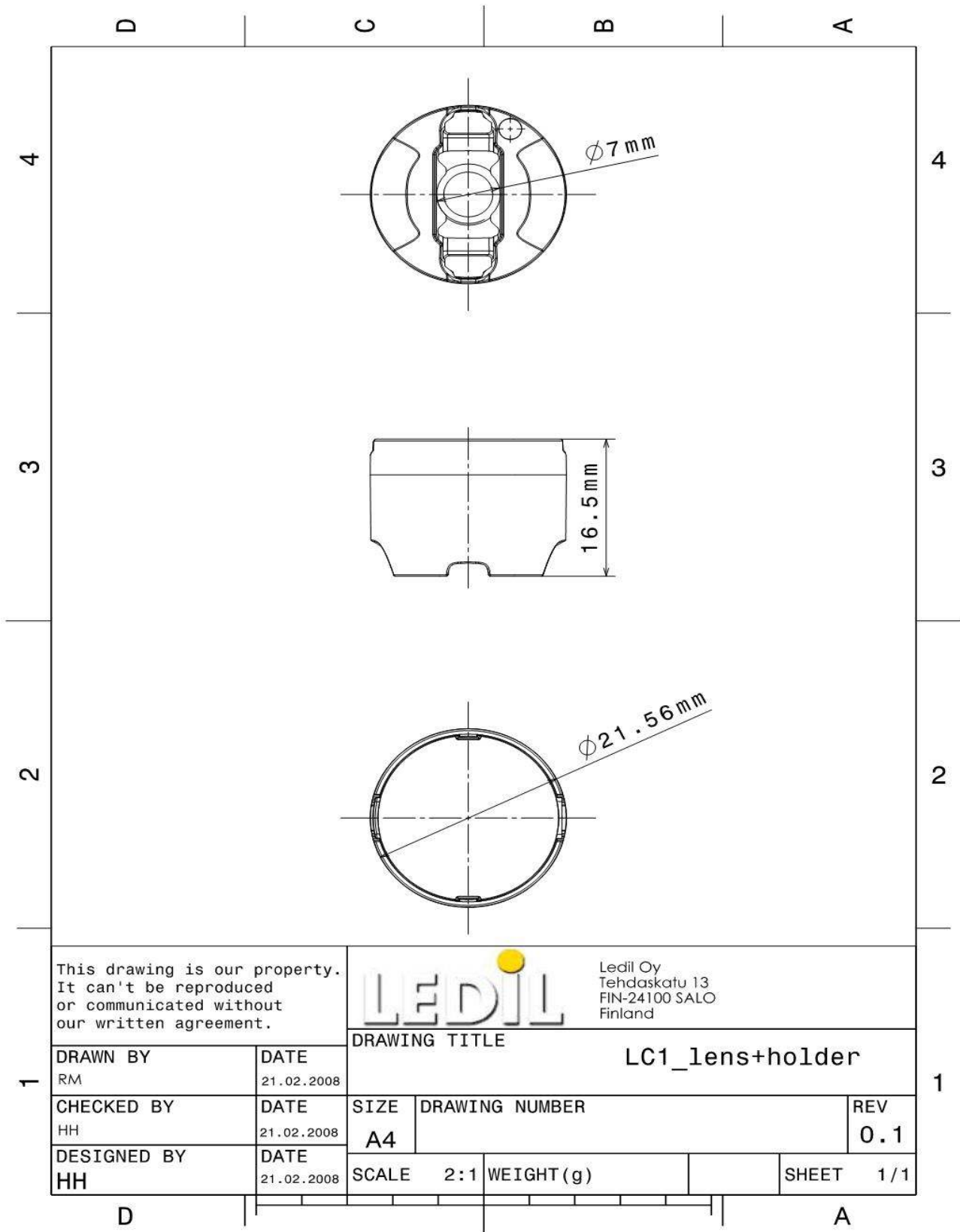


Relative Intensity of LC1-REC



EULUMDAT & IES FILES AVAILABLE BY REQUEST

DRAWINGS



© Ledil Oy - PRELIMINARY - Subject to change without prior notice